

MAZURY CUP...→



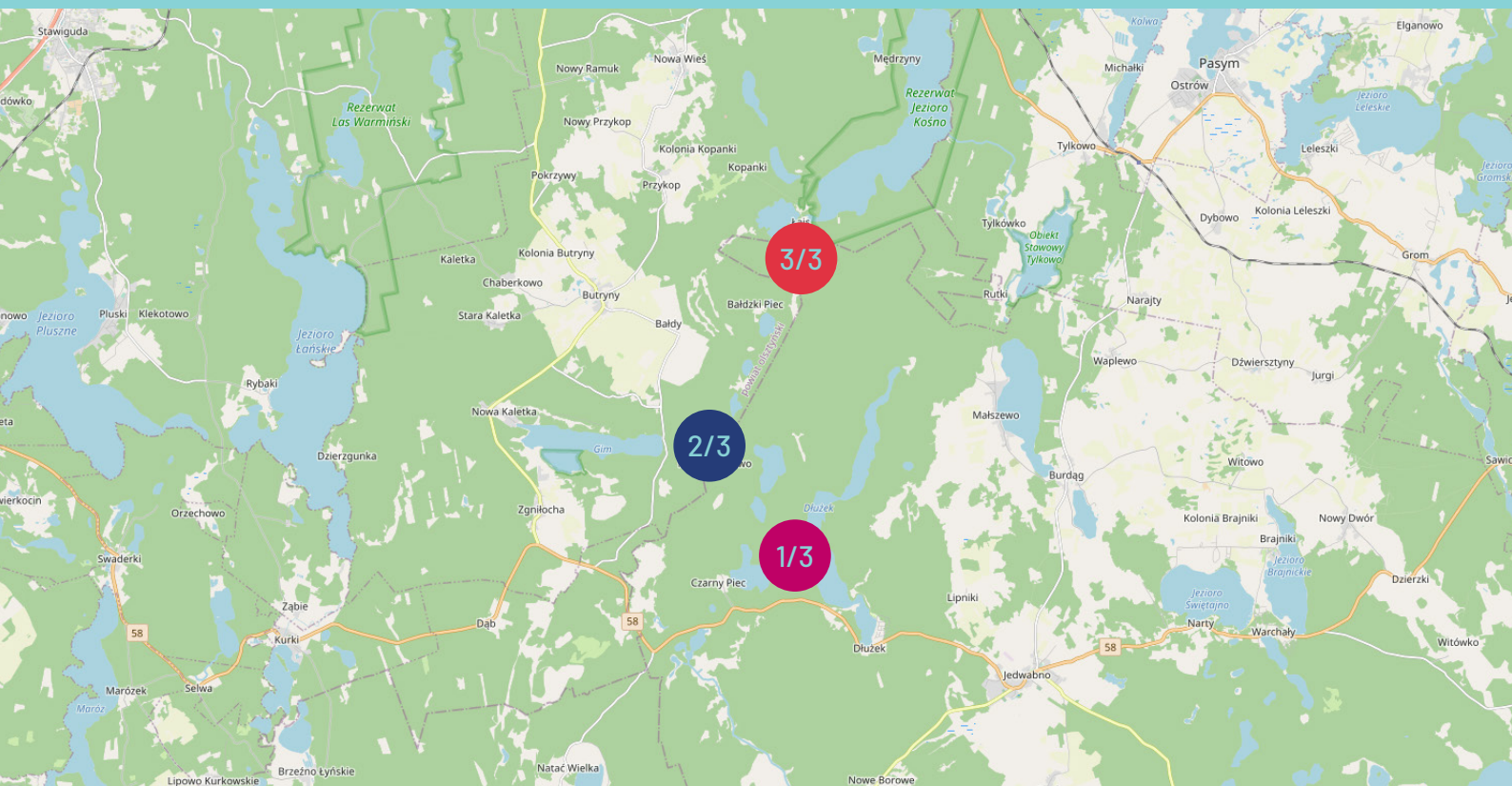


ABSTRACT

It seems that the second edition of each event should be better than the first. In 2023 we presented our Mazury Cup concept which means both unique and pristine areas, as well as event centers with direct access to the lakes, decorated with the idyllic atmosphere of first days of summer. Now, we face another challenge - to surprise you with something better. Will that be three completely different stages? Will the finish line located on the

sandy beach of Gim Lake be a valuable culmination to the demanding long distance race? Or maybe something else will constitute the strength of 2024 edition? We should assume that these are rhetorical questions and the best way to answer them will be to come to Butryny area during the last weekend of June. Welcome!

- Wojtek Dwojak and Jacek Morawski





1/3

CZARNY PIEC

middle distance
28.06.2024

2/3

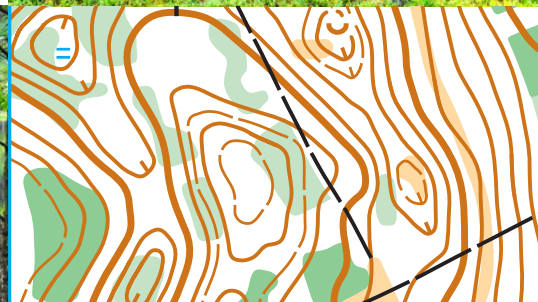
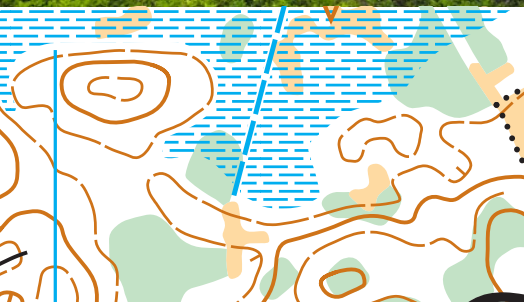
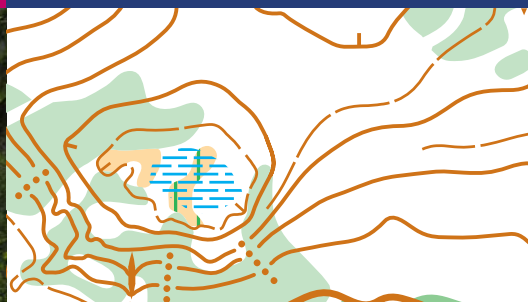
JEZIORO GIM

long distance
29.06.2024

3/3

BAŁDZKI PIEC

chasing start
30.06.2024



ORGANIZER

Dolnośląski Związek Orientacji Sportowej
ul. Borowska 1-3
50-529 Wrocław, Poland

PARTNERS

Polski Związek Orientacji Sportowej
Forest Inspectorate Jedwabno

CO-ORGANIZER

Fundacja Slow Event
ul. Lindleya 16
02-013 Warszawa, Poland

EVENT RANK

3-stage national ranking event.

ORGANIZING COMMITTEE

Event Director
Main Referee
Start
SPORTident
Cartography

Wojciech Dwojak
Jacek Morawski
Arleta Sosenko
Marcin Leśnicki
Wojciech Dwojak, Jacek Morawski



28-30.06.2024

MAZ
URY
CUP...→

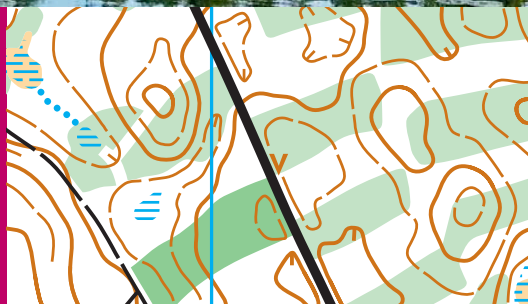
mazurycup.pl



1/3

CZARNY PIEC

middle distance
28.06.2024



LOCATION

Meadow by Czarne Lake
GPS: 53.545701, 20.625579

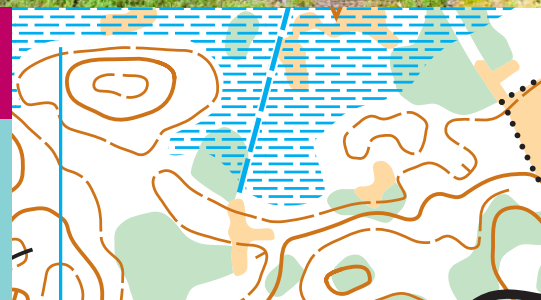
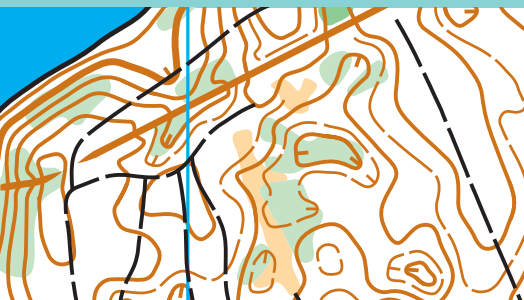
During the first stage, you will face fast terrain with smooth and non-obvious micro-relief. It will be crucial to slam on the brakes at the right moments to avoid making mistakes. Moreover, at this stage there will be some history in the background - the woods are full of remnants of defensive fortifications from World War II, mainly bunkers buried in the forest wilderness. In short, it will be a **fast** and **tricky** stage, perfect for getting to know the characteristics of the masurian terrain.



PROGRAM

16:30
20:00

first start
finish closing



28-30.06.2024

MAZ
URY
CUP...→

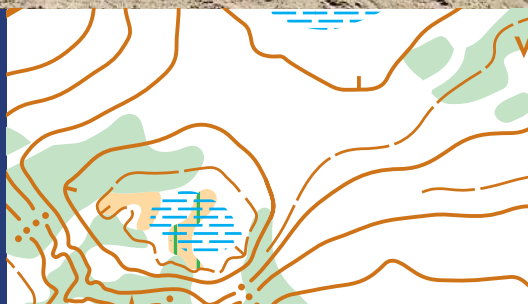
mazurycup.pl



2/3

JEZIORO GIM

long distance
29.06.2024



LOCATION

Beach by Gim Lake
GPS: 53.576963, 20.603619

The terrain of the second stage is completely different from the first one. The relief is not as complicated, but in return you will experience great variability in the vegetation and numerous marshes. When describing the second stage it is impossible not to mention the finish line located on the beach of Gim Lake. It is known to be one of the cleanest lakes in Poland and always dazzles with its azure water. As befits a decent classic - it will be a **long** and **epic** race.



PROGRAM

11:00 first start
16:00 finish closing



28-30.06.2024

MAZ
URY
CUP...→

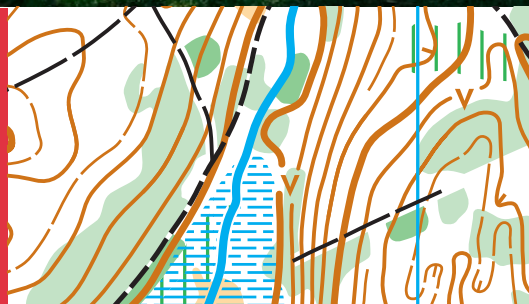
mazurycup.pl



3/3

BAŁDZKI PIEC

chasing start
30.06.2024



LOCATION

Meadow by Łowne Duże Lake
GPS: 53.602106, 20.639989

The final chasing start will be held in a terrain that is a mixture of the two previous stages. You will face both hilly areas with multiple contours, as well as those offering diverse vegetation and picturesque marshes. Finish line will be located in the charming settlement of Bałdzki Piec whose inhabitants remember orienteering events that were held in the nearby woods in the 1980s. During this stage **fast legs** and **cool head** will certainly come in handy.



PROGRAM

10:30
14:00

first start
finish closing



28-30.06.2024

MAZ
URY
CUP...→

mazurycup.pl



ENTRIES

The deadline for all entries is **17.06.2024** or (if earlier) reaching the participant limit. Entries are to be made via Polish Orienteering Association entry system: <https://orienteering.org.pl/pzos/entries>

PARTICIPANT LIMIT

Limit of event participants is set at **500** athletes. After reaching the limit entries will be closed and registration of additional athletes will be possible only in the case of withdrawal of athletes entered within the limit.

CANCELLATIONS

It is possible to modify your entry details free of charge (including its cancellation) until **17.06.2024**. In case of entry cancellation after 17.06.2024 we do not provide any refund.

SPORT CLASSES

KM10, KM12, KM14, KM16, KM18, KM20, KM21, KM21E, KM35, KM40, KM45, KM50, KM55, KM60, KM65, KM70, KM75, KM80, KM85, KM90

The organizer reserves the right to combine classes in case of small number of entries.



OPEN CLASSES

	Distance	Difficulty	Description
Rodzinna	1,5-2,0 km	easy	marked course for families (group/family participants)
Enka	1,5-2,0 km	easy	marked course for children (individual participants)
Krótka	2,0-3,0 km	easy	easy course for beginners who do not need marked course
Średnia	3,0-4,0 km	medium	for those who already have some orienteering experience
Challenge	3,0-4,0 km	difficult	short but technically demanding course for challengers
Ultra	3,5-6,0 km	difficult	technically demanding course for fans of orienteering adventures

There is no start time assignment for open classes, you can start at any time during two hours and thirty minutes of the start time (00-120').



FEES

	KM10-14 Rodzinna Enka	KM16-20 KM65 and older Krótka Średnia	KM21-60 Challenge Ultra
1st deadline 30.04.2024	20 PLN / stage 60 PLN / 3 stages	35 PLN / stage 105 PLN / 3 stages	45 PLN / stage 135 PLN / 3 stages
2nd deadline 17.06.2024	25 PLN / stage 75 PLN / 3 stages	40 PLN / stage 120 PLN / 3 stages	55 PLN / stage 165 PLN / 3 stages
late entry	30 PLN / stage 90 PLN / 3 stages	45 PLN / stage 135 PLN / 3 stages	65 PLN / stage 195 PLN / 3 stages

PAYMENTS

Dolnośląski Związek Orientacji Sportowej
ul. Borowska 1-3
50-529 Wrocław
Poland
IBAN : **PL87116022020000000230177716**
SWIFT: **BIGBPLPW**

Please include participant details (name and club) and "Mazury" word in bank transfer description.

The validity of the entry within a given deadline is determined by entry fee payment to the organizer's account, not by the fact of just registering an entry via entry system.

We also accept payment in Euro (EUR). Please find all entry fees and payment details on our website and choose the preferred currency.



PUNCHING SYSTEM

SPORTident system will be used for punching during the event. The stations will operate in AIR+ mode.

It is possible to rent a SPORTident card from the organizer for 5 PLN / stage. Please submit your request by e-mail (mazury@mazurycup.pl) by 17.06.2024.

MAPS

All maps prepared according to ISOM 2017-2. Digital print, sealed in plastic bags.

1:10 000, e-2,5 m for KM10-45,
Średnia, Challenge, Ultra
1:7 500, e-2,5 m for KM50-90,
Rodzinna, Enka, Krótka

START TIME REQUIREMENTS

We give you the opportunity to specify any needs of individually adjusted the start time at one or more stages which may be useful i.e. in case of child care. More details can be found at mazurycup.pl.

PRIZE

Gifts and diplomas for the TOP3 participants in each class in the general classification after three stages will be awarded.

ENVIRONMENT

Respecting the surrounding nature is extremely important, therefore during the competition we will try to reduce the negative impact of our event on the environment as much as possible - we will replace plastic with paper products where possible. You can also help us with this - bring your own reusable cups for water at the finish line.



ADDITIONAL INFORMATION

- The organizer provides medical care during the event.
- The organizer has a valid third party insurance.
- The organizer is not responsible for individual insurance of the participants.
- The organizer is not financially responsible for any items lost during the event.
- The organizer reserves the right to change the event program, as well as to cancel the event due to force majeure.
- The organizer reserves the right to the final interpretation of this Bulletin.
- By registering for the event you consent to the publication of your image on the website mazurycup.pl, in the organizer's social media and in other promotional materials.
- By registering for the event you accept this Bulletin.
- Further information about the event can be found at mazurycup.pl.



SPONSORS

hitmark
= robotics



 **Knack
Clinic**

28-30.06.2024

**MAZ
URY
CUP** →

mazurycup.pl

Sudety Cup

2024

Czarna Góra Resort

1/4

Pasiecznik

middle distance
25.07.2024

2/4

Żmijowiec

long distance
26.07.2024

3/4

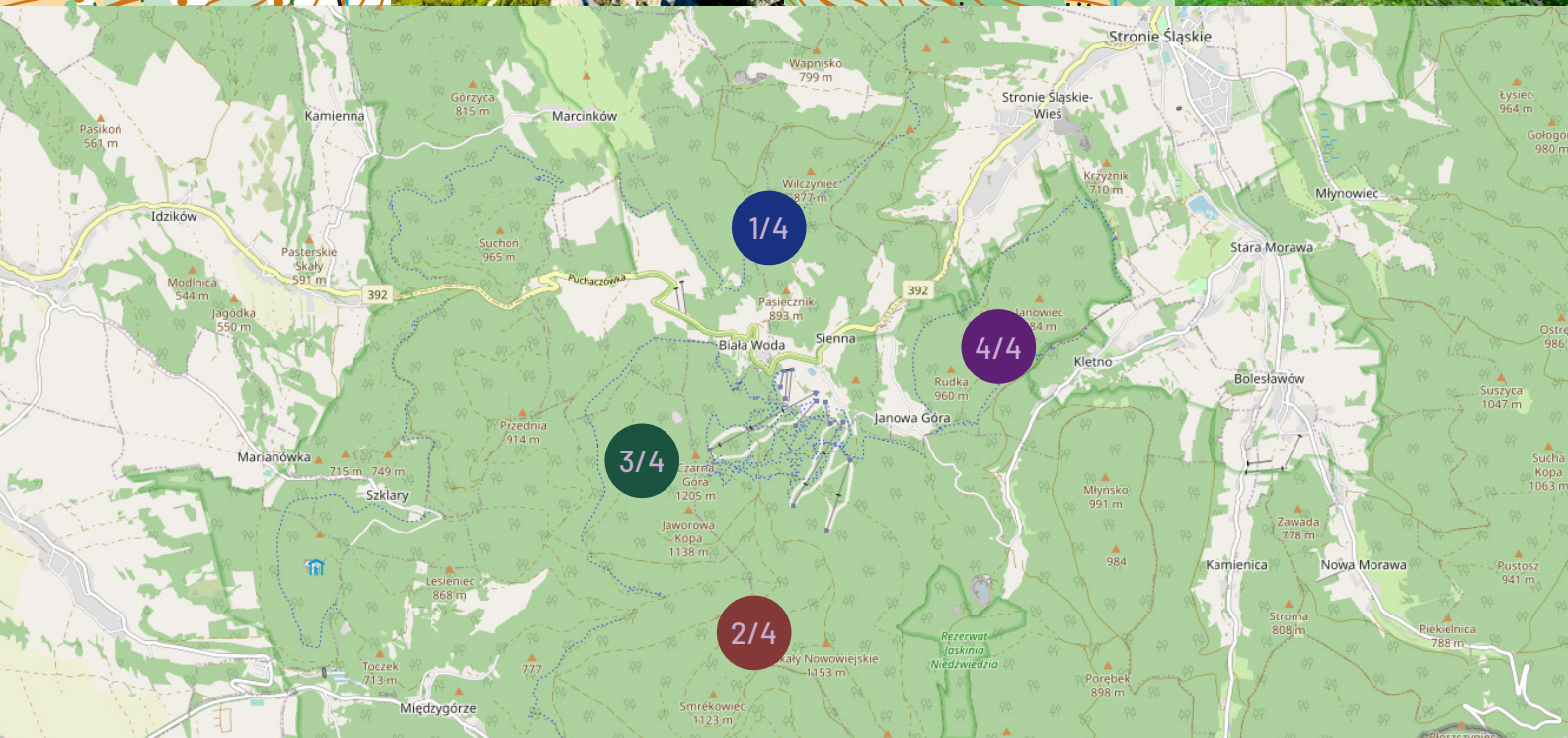
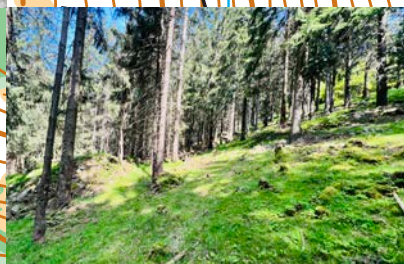
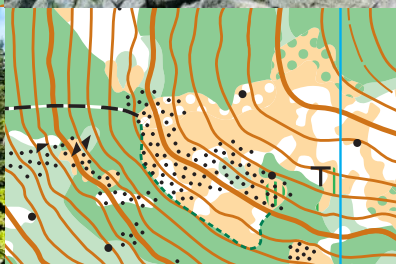
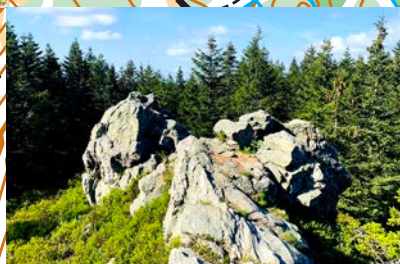
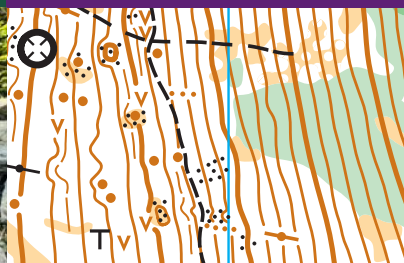
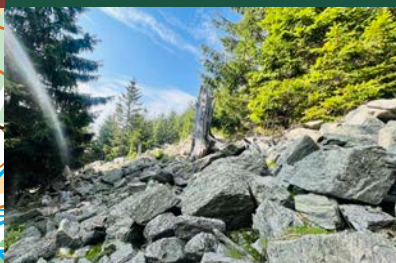
Czarna Góra

middle distance
27.07.2024

4/4

Janowa Góra

chasing start
28.07.2024



25-28.07.2024

Sudety
Cup

sudetycup.pl