

# MAZURY CUP...→



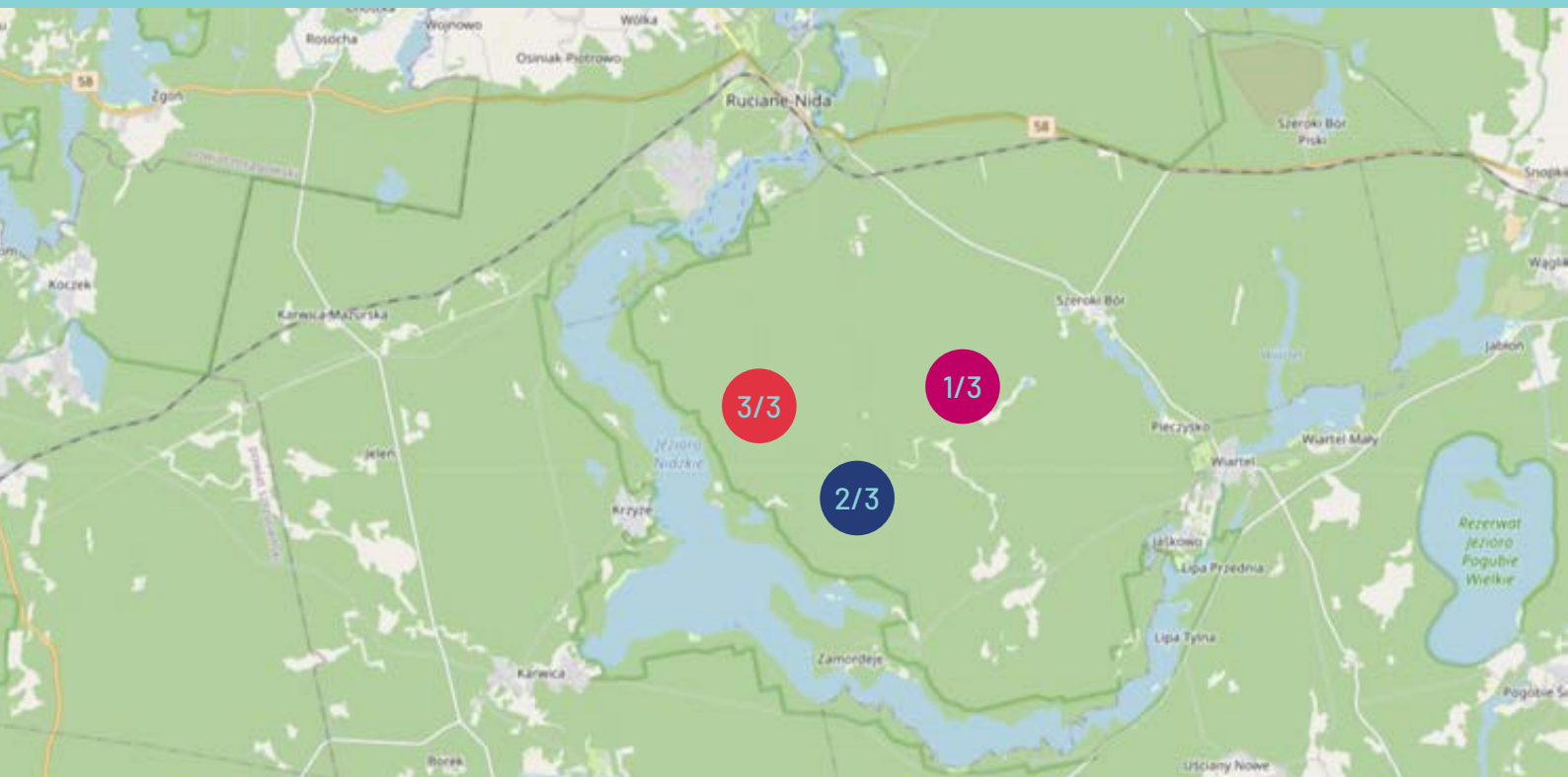


# ABSTRACT

Get ready for a true Masurian challenge! At the end of June we move from the western edge of Masuria straight into its very heart – to Ruciane-Nida and the Pisz Forest. This is terrain that does not pretend to be wild – it simply is wild. Harsh forests, marshy depressions and distinct post-glacial landforms will keep you fully focused from the first to the last stage. After the effort, the surround-

ings offer plenty of attractions and outdoor activities, so everyone will find something for themselves. Mazury Cup means serious running in terrain that quickly verifies every decision you make – and that is exactly why it stays in your memory for a long time.

- Wojtek Dwojak & Jacek Morawski





1/3

## JEZIORO MAŁZY

middle distance  
27.06.2026

2/3

## ZAMORDEJE MAŁE

long distance  
28.06.2026

3/3

## JEZIORO NIDZKIE

chasing start  
29.06.2026



## ORGANIZERS

Dolnośląski Związek  
Orientacji Sportowej  
ul. Borowska 1-3  
50-529 Wrocław, Poland

Fundacja  
Slow Event  
ul. Lindleya 16  
02-013 Warszawa, Poland

## PARTNERS

International Orienteering Federation  
Polish Orienteering Association  
UKS Technik Ruciane-Nida  
Forest Inspectorate Maskulińskie

## ORGANIZING COMMITTEE

Event Director  
Main Referee  
IOF Adviser/Controller  
Start  
SPORTident  
Cartography

Wojciech Dwojak  
Jacek Morawski  
Tadeusz Piłkowski  
Arleta Sosenko  
Marcin Leśnicki  
Wojciech Dwojak, Jacek Morawski

## EVENT RANK

3-stage individual national ranking  
event, KM21E classes with WRE  
status during stage 1.

27-29.06.2026

MAZ  
URY  
CUP...→

mazurycup.pl



1/3

# JEZIORO MAŁZY

middle distance  
27.06.2026



## LOCATION

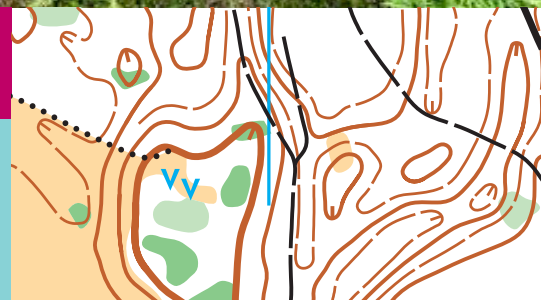
Czapla shed  
GPS: 53.585971, 21.587606

The first stage will take you around Lake Małzy, where fast, runnable sections cut by a dense network of rides will alternate with large, swampy depressions full of varied vegetation. The terrain will demand careful map reading and strict control of pace which changes here almost step by step. It is a place full of natural obstacles and character, and with a bit of luck you may even spot a lynx which has been living in this area for years.



## PROGRAM

15:00 first start  
19:00 finish closing



27-29.06.2026

MAZ  
URY  
CUP...→

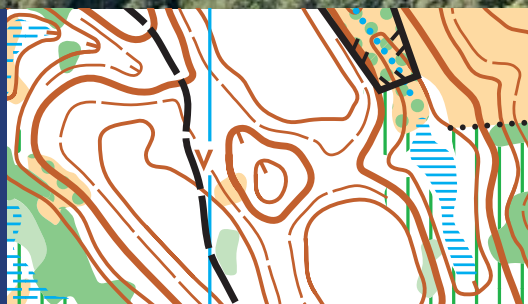
mazurycup.pl



2/3

# ZAMORDEJE MAŁE

long distance  
28.06.2026



## LOCATION

Czapla shed  
GPS: 53.585971, 21.587606

During the second stage you will dive into one of the wildest parts of the Pisz Forest. Expect highly varied runnability - at times excellent, at times limited by lush vegetation and wet depressions. This is terrain that requires precise map reading and sound route choices. This long distance will reward consistency, endurance and the ability to adjust your rhythm throughout the entire race.



## PROGRAM

11:00 first start  
16:00 finish closing



27-29.06.2026

MAZ  
URY  
CUP...→

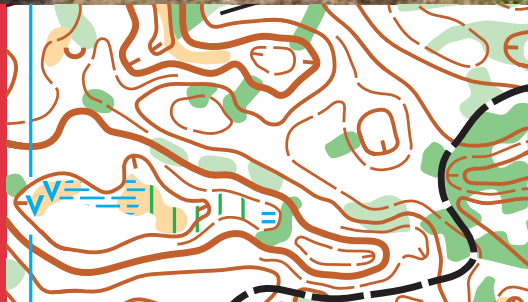
mazurycup.pl



3/3

# JEZIORO NIDZKIE

chasing start  
29.06.2026



## LOCATION

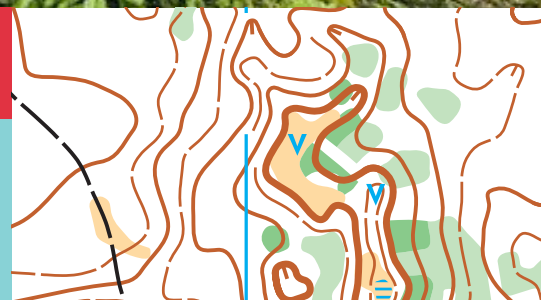
Timber yard at Lake Nidzkie  
GPS: 53.598345, 21.537602

The third stage will bring the most exciting moments of the event. The chasing start will keep the tension high right until the very end. It will be a dynamic terrain with fast sections that require total control, and a single moment of hesitation may reshuffle the results. The closer you get to the shore of Lake Nidzkie, the more crucial quick and confident decisions become. The finish area by the lake will be the perfect culmination of the entire competition - a finale you will not forget.



## PROGRAM

10:30 first start  
14:00 finish closing



27-29.06.2026

MAZ  
URY  
CUP...→

mazurycup.pl



## ENTRIES

The deadline for all entries is **15.06.2026** or (if earlier) reaching the participant limit. Entries are to be made via Polish Orienteering Association entry system: <https://orienteering.org.pl/pzos/entries>

## PARTICIPANT LIMIT

Limit of event participants is set at **500** athletes. After reaching the limit entries will be closed and registration of additional athletes will be possible only in the case of withdrawal of athletes entered within the limit.

## CANCELLATIONS

It is possible to modify your entry details free of charge (including its cancellation) until **15.06.2026**. In case of entry cancellation after 15.06.2026 we do not provide any refund.

## SPORT CLASSES

KM10, KM12, KM14, KM16, KM18, KM20, KM21, KM21E, KM35, KM40, KM45, KM50, KM55, KM60, KM65, KM70, KM75, KM80, KM85, KM90

*The organizer reserves the right to combine classes in case of small number of entries.*

## OPEN CLASSES

|           | Distance   | Difficulty | Description  |
|-----------|------------|------------|--|
| Rodzinna  | 1,5-2,0 km | easy       | marked course for families (group/family participants)           |
| Enka      | 1,5-2,0 km | easy       | marked course for children (individual participants)             |
| Krótka    | 2,0-3,0 km | easy       | easy course for beginners who do not need marked course          |
| Średnia   | 3,0-4,0 km | medium     | for those who already have some orienteering experience          |
| Challenge | 3,0-4,0 km | difficult  | short but technically demanding course for challengers           |
| Ultra     | 3,5-6,0 km | difficult  | technically demanding course for fans of orienteering adventures |

There is no start time assignment for open classes, you can start at any time during two hours of the start time (00-120').



## FEES

|  | <b>KM10-14<br/>Rodzinna<br/>Enka</b> | <b>KM16-20<br/>KM65 and older<br/>Krótka<br/>Średnia</b> | <b>KM21-60<br/>Challenge<br/>Ultra</b> |
|--|--------------------------------------|--|--|
|--|--------------------------------------|--|--|

|                                    |                                      |                                      |                                      |
|------------------------------------|--------------------------------------|--------------------------------------|--------------------------------------|
| <b>1st deadline<br/>30.04.2026</b> | 25 PLN / stage<br>75 PLN / 3 stages  | 40 PLN / stage<br>120 PLN / 3 stages | 55 PLN / stage<br>165 PLN / 3 stages |
| <b>2nd deadline<br/>15.06.2026</b> | 30 PLN / stage<br>90 PLN / 3 stages  | 45 PLN / stage<br>135 PLN / 3 stages | 65 PLN / stage<br>195 PLN / 3 stages |
| <b>late entry</b>                  | 35 PLN / stage<br>105 PLN / 3 stages | 50 PLN / stage<br>150 PLN / 3 stages | 75 PLN / stage<br>225 PLN / 3 stages |

## PAYMENTS

### Dolnośląski Związek Orientacji Sportowej

ul. Borowska 1-3  
50-529 Wrocław  
Poland

IBAN : **PL87116022020000000230177716**

SWIFT: **BIGBPLPW**

Please include participant details (name and club) and "Mazury" word in bank transfer description.

The validity of the entry within a given deadline is determined by entry fee payment to the organizer's account, not by the fact of just registering an entry via entry system.

We also accept payment in Euro (EUR). Please find all entry fees and payment details on our website and choose the preferred currency.







## MAPS

All maps prepared according to ISOM 2017-2. Digital print on synthetic (waterproof) paper.

1:10 000, e-2,5 m for KM10-45,  
Średnia, Challenge, Ultra  
1:7 500, e-2,5 m for KM50-90,  
Rodzinna, Enka, Krótka

## WRE

1st stage in KM21E classes will be a World Ranking Event race. KM21E competitors who want to be classified within the WRE during this stage, in addition to submitting the standard registration via the Polish Orienteering Association system, must also register for this race via IOF Eventor by **15.06.2026**:  
<https://eventor.orienteering.org/Events/Show/8758>

Please find more information concerning World Ranking Event race in WRE Appendix at the end of this bulletin.



## START TIME REQUIREMENTS

We give you the opportunity to specify any needs of individually adjusted the start time at one or more stages which may be useful i.e. in case of child care. More details can be found at [mazurycup.pl](http://mazurycup.pl).

## CAFETERIA

There will be a cafeteria during each stage at the Event Center. Simple barbecue dishes, snacks and drinks will be offered.

## KID'S ZONE

There will be Kid's zone with attractions for the youngest organized at each stage at the Event Center. Also, a special Mini-O course for children located next to the Event Center will be available. Both Kid's zone and Mini-O will be free of charge and available to all willing children without prior registration.

27-29.06.2026

MAZ  
URY  
CUP...→

[mazurycup.pl](http://mazurycup.pl)



## TRAINING

A free training in the area adjacent to the competition terrain will be available during the week before the competition. Self-printed maps will be provided in 1:7 500 and 1:10 000 scales. More information will be available at [mazurycup.pl](http://mazurycup.pl).

## PUNCHING SYSTEM

SPORTident system will be used for punching during the event. The stations will operate in AIR+ mode.

It is possible to rent a SPORTident card from the organizer for 5 PLN / stage. Please submit your request by e-mail ([mazury@mazurycup.pl](mailto:mazury@mazurycup.pl)) by 15.06.2026 and make payment for the SPORTident card rental by bank transfer together with the entry fee payment.

## PRIZE

Gifts and diplomas for the TOP3 participants in each class in the general classification after three stages will be awarded. All K10, M10, Enka and Rodzinna class participants will be awarded small gifts.

## ENVIRONMENT

Respecting the surrounding nature is extremely important, therefore during the competition we will try to reduce the negative impact of our event on the environment as much as possible - we will replace plastic with paper products where possible. You can also help us with this - bring your own reusable cups for water at the finish line.

## ADDITIONAL INFORMATION

- The organizer provides medical care during the event.
- The organizer has a valid third party insurance.
- The organizer is not responsible for individual insurance of the participants.
- The organizer is not financially responsible for any items lost during the event.
- The organizer reserves the right to change the event program.
- The organizer reserves the right to cancel the event due to force majeure.
- The organizer reserves the right to the final interpretation of this Bulletin.
- By registering for the event you consent to the publication of your image on the website [mazurycup.pl](http://mazurycup.pl), in the organizer's social media and in other promotional materials.
- By registering for the event you accept this Bulletin.
- Further information about the event can be found at [mazurycup.pl](http://mazurycup.pl).



## WRE APPENDIX



### VISAS

According to current regulations, citizens of some countries must obtain a visa in order to enter Poland. Please check the following website for more information:

<https://www.gov.pl/web/diplomacy/visas>

Visas should be applied for at your closest Polish embassy. Please note that conditions of entry may change. All participants are advised to keep themselves updated on the situation by consulting their local Polish embassy.

### TRAININGS

Apart from official training available during the week before the competition, free training maps from previous editions of Mazury Cup are available on our website:

<https://mazurycup.pl/en/maps/>

### ACCOMMODATION AND FOOD

Variety of accommodation options can be found online. Masuria is a popular touristic destination with multiple restaurants, hotels, apartments and other types of lodgings.

### TRANSPORT

No transport offered by the organizers.

### CLIMATE

Temperature for June in Ruciane-Nida vary between 15 and 29 °C with an average of 22 °C. Average rainfall for July is 34 mm with 14 rainy days during a month. The weather can be anything from warm and sunny to windy and rainy.

### WINNING TIME

30-35 minutes for both KM21E classes.



## SPONSORS

**hitmark**  
**= robotics**



## PARTNERS



27-29.06.2026

**MAZURY**  
**CUP** →

[mazurycup.pl](http://mazurycup.pl)

# Sudety Cup

# 2026

Orlickie Mountains  
Orlické hory

1/4

*Siwa Skala*

middle distance  
30.07.2026

2/4

*Góra Kłobuk*

long distance  
31.07.2026

3/4

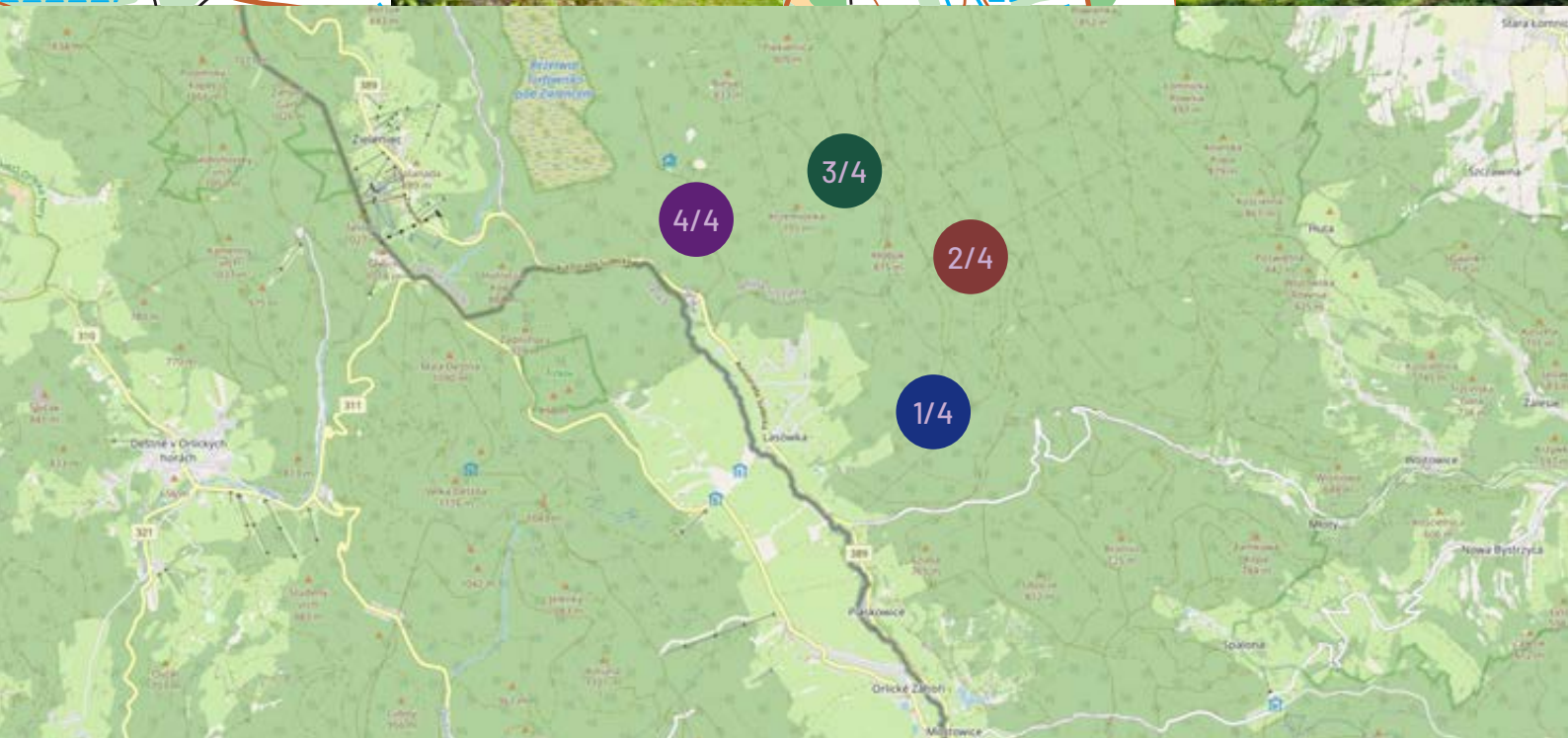
*Mostowy Potok*

middle distance  
1.08.2026

4/4

*Dzika Orlica*

chasing start  
2.08.2026



30.07-2.08.2026

Sudety  
Cup

[sudetycup.pl](http://sudetycup.pl)



# J<sup>WOC</sup> 2027

JUNIOR WORLD  
ORIENTEERING  
Championships  
July 11 ——— 17  
Dolny Śląsk ———  
POLAND ———

11-17.07.2027

J<sup>WOC</sup>  
2027

[jwoc2027.pl](http://jwoc2027.pl)



CX80 WORLD MASTERS  
**ORIENTEERING  
CHAMPIONSHIPS**  
PRZEWORSK - RZESZÓW  
7TH - 14TH AUGUST

5 STAGE OPEN COMPETITION  
**AZYMUT CUP**

**VISIT POLAND**  
AND COMPETE WITH THE BEST  
RUNNERS IN THE WORLD  
ENTRIES OPEN NOW

**CHECK US OUT AT  
WMOC2026.PL**



**Be O-Champion  
in Poland2026**