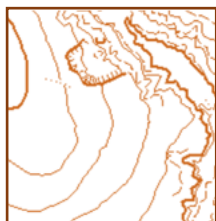


Ułóż mapkę z podanych wycinków według podanej niżej tabelki .
 Niektóre wycinki są obrócone i dwa z nich nie pasują do mapy,
 Dwa wycinki są wpisane prawidłowo w tabelkę .

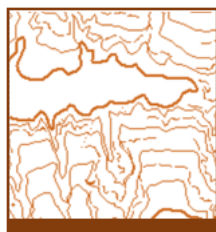
1



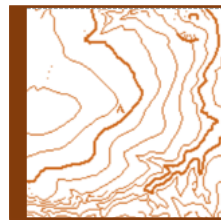
2



3



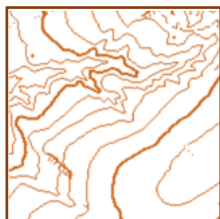
4



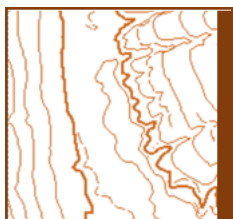
5



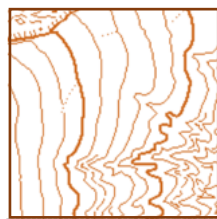
6



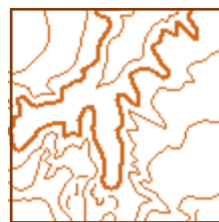
7



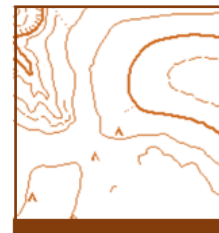
8



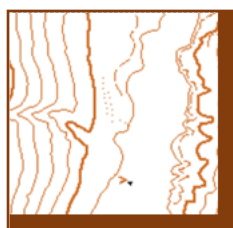
9



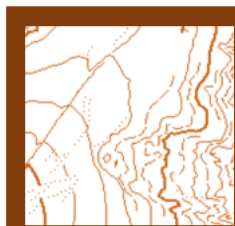
10



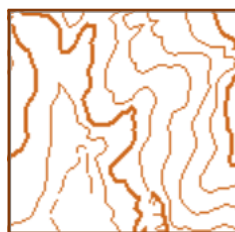
11



12



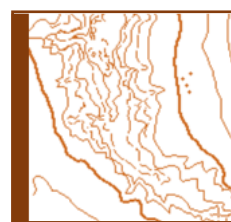
13



14



15



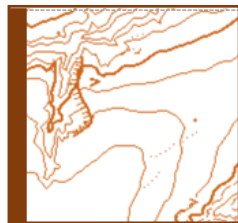
16



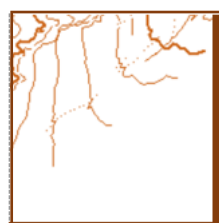
17



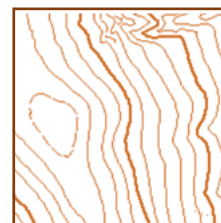
18



19



20



1					
					19